

# TONNEAU FITTING INSTRUCTION

PROTON JUMBUCK

2003 - 2011

**Part number: 693**

## Package includes

<input type="checkbox"/> 1 X Tonneau Cover	<input type="checkbox"/> 2 x Bar Brackets
<input type="checkbox"/> 1 x Tonneau Support Bar	<input type="checkbox"/> 32 x Rivets
<input type="checkbox"/> 3 x Aluminium Rope Track-385mm long ea.	<input type="checkbox"/> 1 x Lock Bracket
<input type="checkbox"/> 1 x Support Bar Sheath	<input type="checkbox"/> 14 x Rope Buttons
<input type="checkbox"/> 1 x Fitting Instructions	<input type="checkbox"/> 4 x Dowel
	<input type="checkbox"/> 2 x 100mm Angle Pieces
	<input type="checkbox"/> 14 x Anti-abrasive Disc

# 1. TONNEAU COVER FITTING

**NOTE** Read entire instructions prior to start.

## 1.1 BASIC TOOL REQUIRED

Drill, 4mm Drill Bit, Rivet Gun, Marking Pencil / Pen

## 1.2 TONNEAU COVER INSTALLATION PROCEDURE

1. Place aluminium sealing angle as shown in **Figure 1**, using two rivets per angle and seal either side with silicon.
2. Using two pieces of dowel, join the 3 aluminium rope tracks together. Place the other 2 pieces of dowel in the ends of the now joined rope track. Sit the dowel on top of the sealing angles.
3. Ensure the channel is above the lip's top edge, so the front bead of the tonneau can slide through from the side. See Figure 1. Using a 4mm drill bit, drill 6 holes 50mm from the end of each of the aluminium rope tracks into the front of tub.
4. Once all the holes have been drilled, remove the dowelling pieces. Squeeze silicon along the back of the rope tracks and pop rivet into place.
5. Mark a position 800mm from the inside edge of the front face of tub towards the rear and 5mm down from the top lip of the tub. Centrally locate the bar bracket over this position and drill and rivet bracket into place. **See Figure 2**. Repeat for other side of tub. Fit tonneau support bar to bar brackets.
6. Slide the front of the tonneau cover through the aluminium rope track section. You will need someone else to reach across and help pull the tonneau through the rope track. Position the self-adhesive Velcro strip on the tub as shown in **Figure 1** so that it aligns with the Velcro strip sewn into the tonneau cover. Repeat for other side of tub. **Note:** Clean this area with soapy water or methylated spirits prior to adhering the strips to ensure the surface is free from any dirt, oil and grease.
7. To fit the rope buttons, start with the **tailgate** and line up vertically each button to each ring grip then measure 145mm down from the **inside edge** and drill and rivet each button. **See Figure 3**. For the **side panels**, follow the same procedure as with the tailgate, drill and rivet buttons alternating from one side to other side of the tub. The front rope button on each side should be 50mm forward from the ring grip so the ring is on an angle pointing forward.
8. Attach the tonneau cover to all rope buttons.
9. To Fit Anti-Abrasive Discs: Firstly clean the area behind each bunji head with a clean rag and methylated spirits. Then attach the anti-abrasive discs centrally behind each bunji head.



*Figure 1*

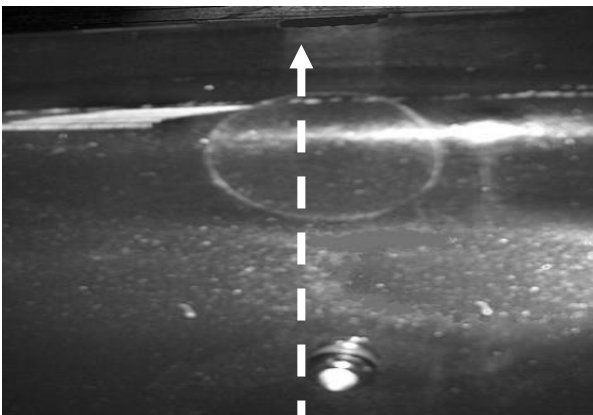
Placement of aluminium rope track. Ensure channel is above the lip's top edge.

Placement of side sealing angles



*Figure 2*

Placement of bar bracket.



*Figure 3*

Placement of rope button

Measure 145MM down from **inside edge** and place button on centre of measurement.

## 2. TONNO LOCK

The Tonno Lock is now a standard feature included with all Tuff Tonneaus. The Tonno Lock is situated at the front of the tonneau cover, so as not to impede the accessibility of the Tuff Tonneau.

Fitting the lock is simple and only requires a small attachment on the inside edge of the tub behind the cab. Together with a padlock, it provides you with an extremely effective theft deterrent. The Tonno Lock is designed to suit

all utes and prevent thieves stealing your Tuff Tonneau, so you can continue to rely on the Tuff Tonneaus' name to give you what you want in a tonneau cover.



### 2.1 BASIC TOOL REQUIRED

Rivet gun, Drill, Torch, and Marking Pencil/Pen.

You will need to buy a small Padlock- make sure the padlock will go through the hole on the Tonno lock.

### 2.2 TONNO LOCK CONTENTS

- 2 X 4MM Aluminium rivets
- 1 x Tonno Lock bracket

### 2.3 FITTING TONNO LOCK

1. Attach the black lock bracket to the bracket on the tonneau with your padlock, and fit the tarp.
2. Getting under the tarp with a torch, place the lock bracket against the body and mark holes with a pen.
3. Remove tonneau and drill the marks with a 4 mm drill bit, place the lock bracket in position and rivet.

## 3. MULTI-FIT SUPPORT BAR

The Tuff Tonneau Multi - Fit Support Bar is designed to fit almost all Utes on the Market, from Subaru Brumbys to Cab Chassis aluminium trays.



### 3.1 BASIC TOOL REQUIRED

Drill, 4mm drill bit

### 3.2 MULTI-FIT SUPPORT BAR CONTENTS

- 1 x hollow bar centrepiece
- 2 x grub screws
- 2 x solid bar end piece
- 1 x Tonneau bar sheath

### 3.3 FITTING MULTI-FIT BAR

1. Insert solid bar pieces into either end of hollow tube. Adjust bar so it fits between bar bracket holders with the holes facing to the ground (so the grub screws don't rub against the tonneau), as shown above and then with a white pencil make a mark through the small holes of the hollow bar onto the solid ends. This is where you will drill a hole to the depth of about 1-2mm (do not go any further)
2. Join the pieces back together and screw grub screws through the hollow bar into the holes that you drilled. **Make sure you do not over tighten the grub screws**. Then place the tonneau sheath over the bar to stop the bar wearing against the tonneau. Refit the bar. You may kink the bar in the middle to give it some extra height to assist with water runoff.

**Warning if you do not fit the tonneau sheath over the bar, the tonneau cover will quickly wear through which is not covered by warranty.**

## 4. WARRANTY AND FEEDBACK

**Please register your warranty details online at:**

**QR Code:**



**Website Link:**

**<http://www.tto.com.au/en-au/warranty.html>**

**Please complete our 2 minute feedback section as we strive to constantly improve for our customers.**

**Your Tuff Tonneau is now ready for work.**