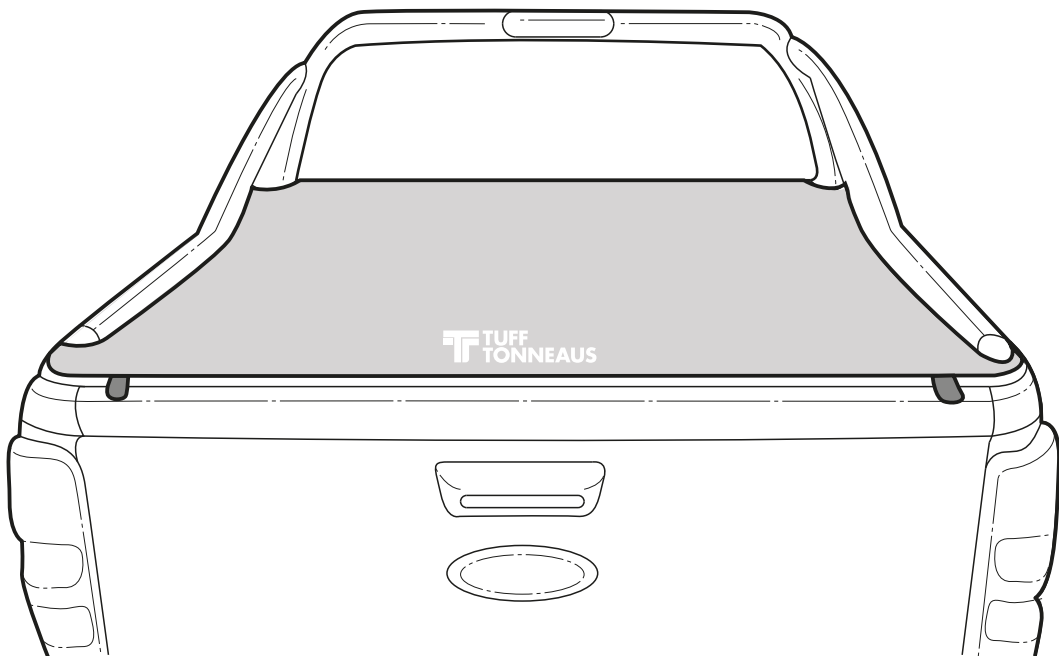




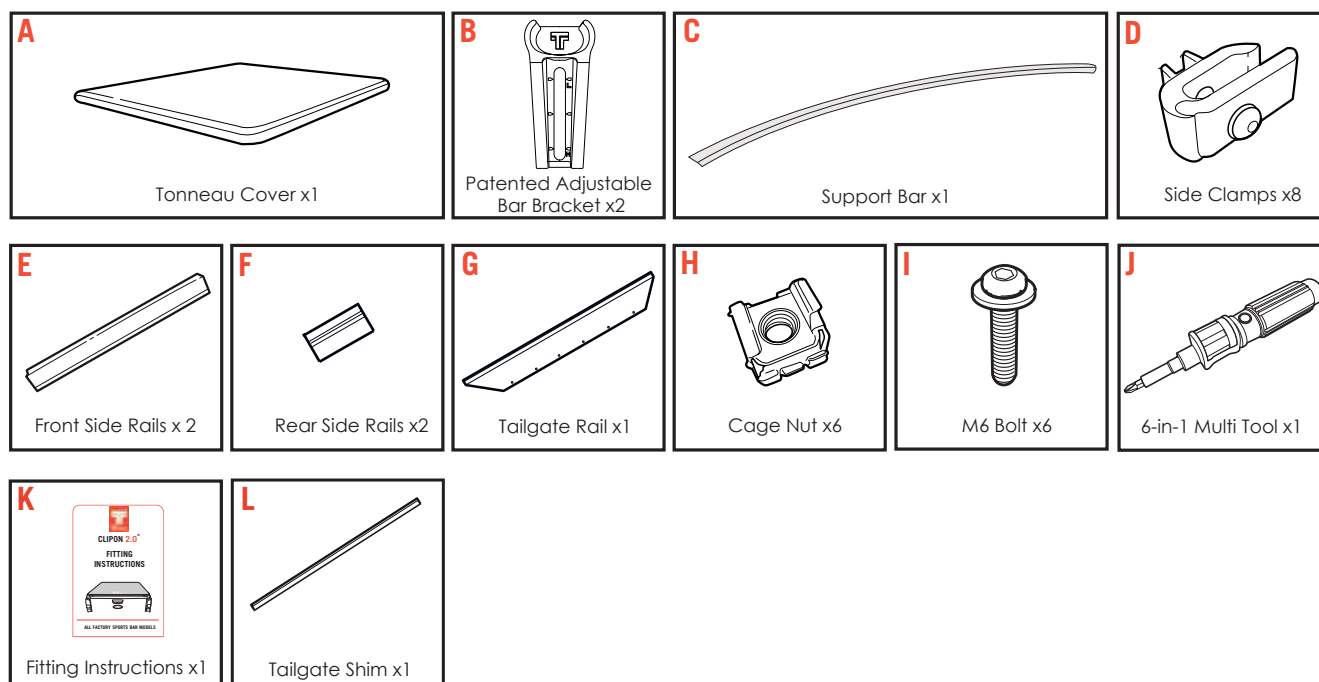
CLIPON 2.0[®]

INSTALL INSTRUCTIONS



FORD RANGER EXTENDED SPORTS BAR

PARTS SUPPLIED



SAFETY NOTES

- Ensure that appropriate Personal Protective Equipment is used.
- During the accessory fitment, ensure all Australian automotive and dealership safety practices are followed.
- Always refer to the vehicles workshop manual when removing components.
- Never use a powered drill to screw the bolts. Always do this by hand with the tool provided to prevent damage to the fasteners.

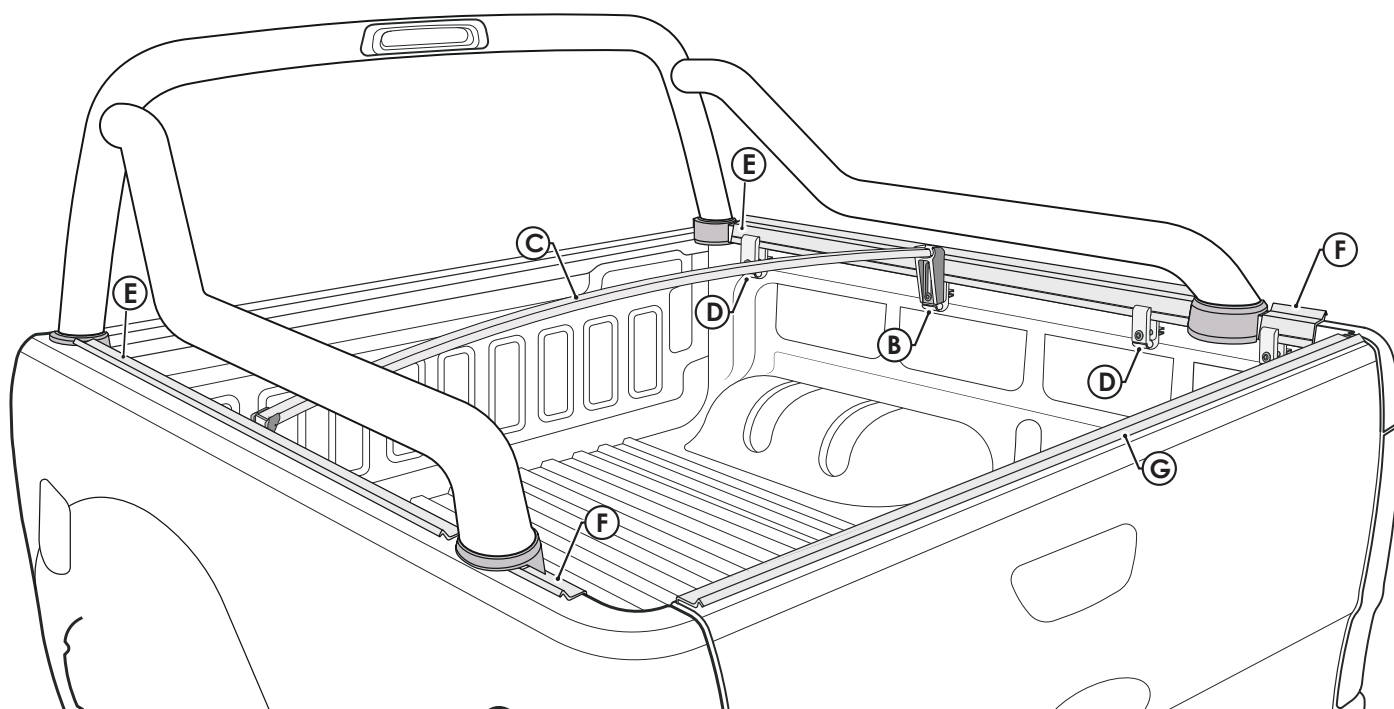


EXAMPLE FITTING VIDEO

- Please also check out our video of fitting a 2.0 tonneau cover.
- Visit the following link: <http://bit.ly/nodrill-tonneau>
- Or simply scan the QR code.
- NB: Some models may vary slightly in fitment, so always consult your fitting instructions for more information.

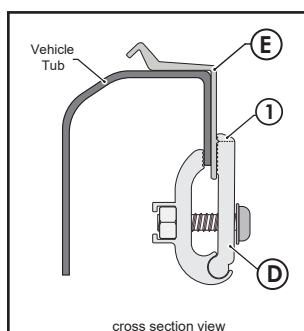
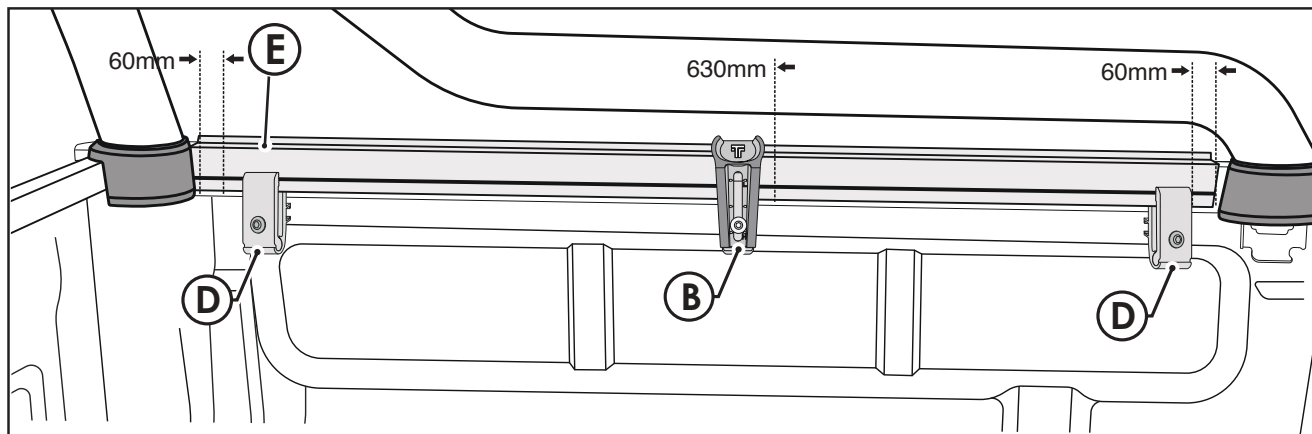


– FINAL ASSEMBLY –



1

ATTACH THE FRONT SIDE RAILS.



Important

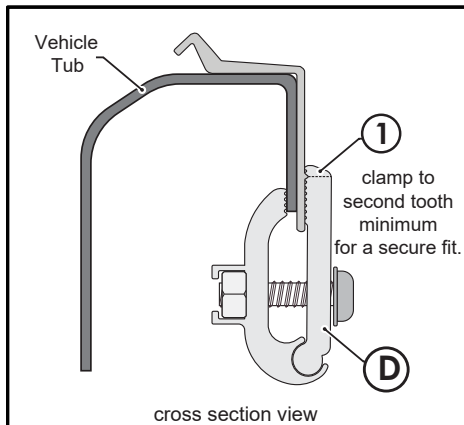
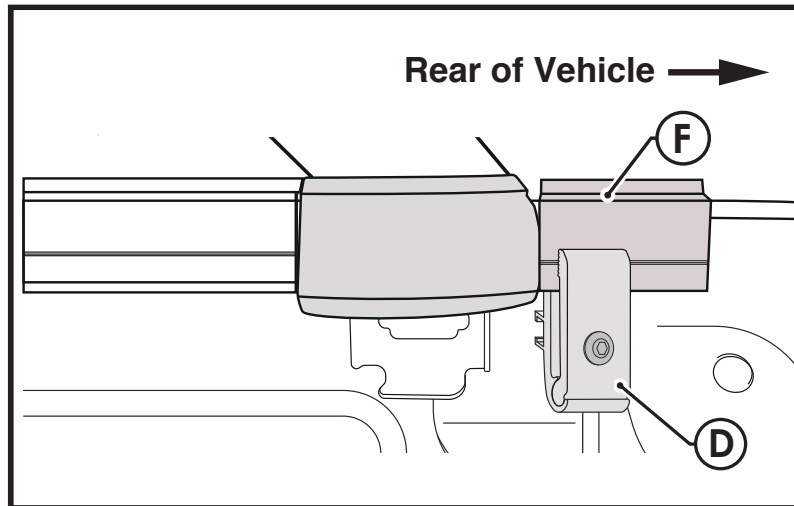


The side clamp **D** needs to engage at a minimum with the 2nd tooth **1** from the top for a secure fit.

- Place the Front Rail **E** onto the front edge of the tub and tighten the Side Clamps **D** so that the Front Rail is secure.

2

ATTACH THE REAR SIDE RAILS.



Important



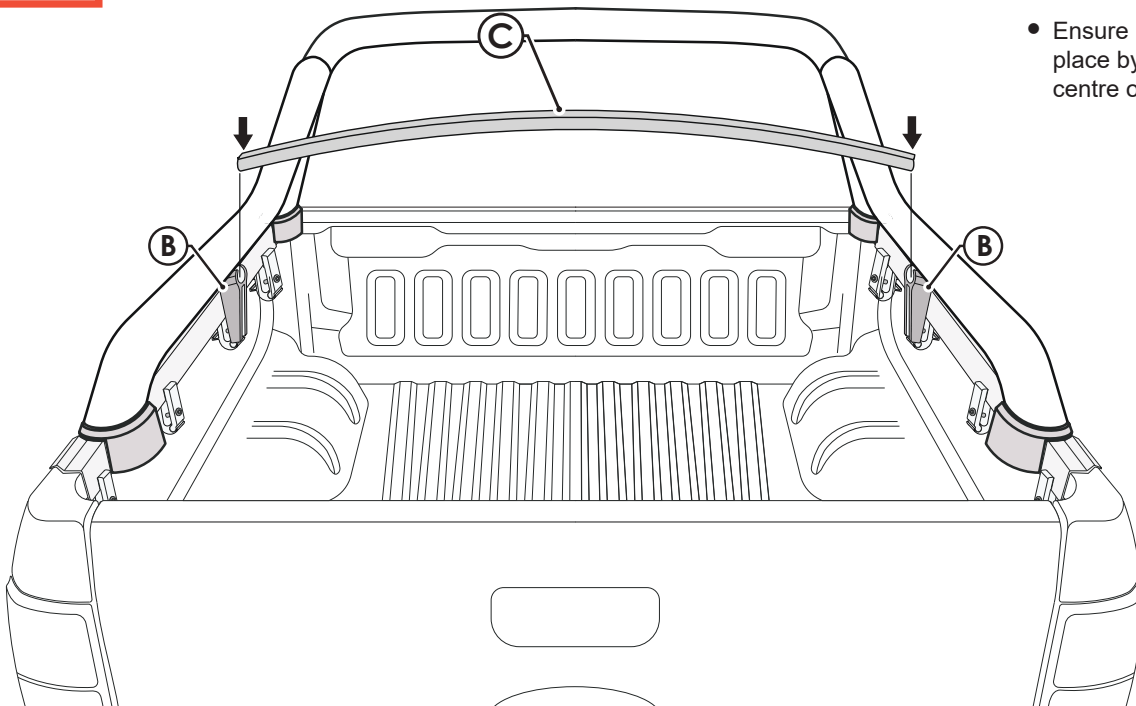
The side clamp (D) needs to engage at a minimum with the 2nd tooth (1) from the top for a secure fit.

- Repeat for the LHS.

3

FIT THE SUPPORT BAR.

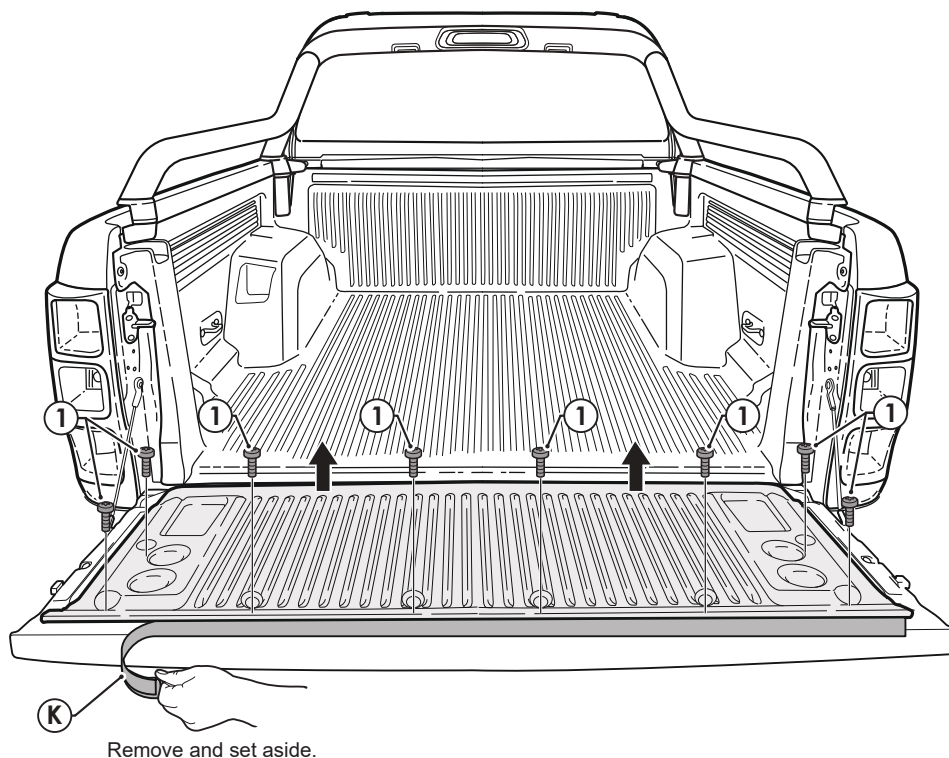
- Rotate the Support Bar (C) 90° and push into the top of the Adjustable Bar Bracket (B).
- Ensure it is seated firmly into place by pushing lightly in the centre of the Support Bar (C).



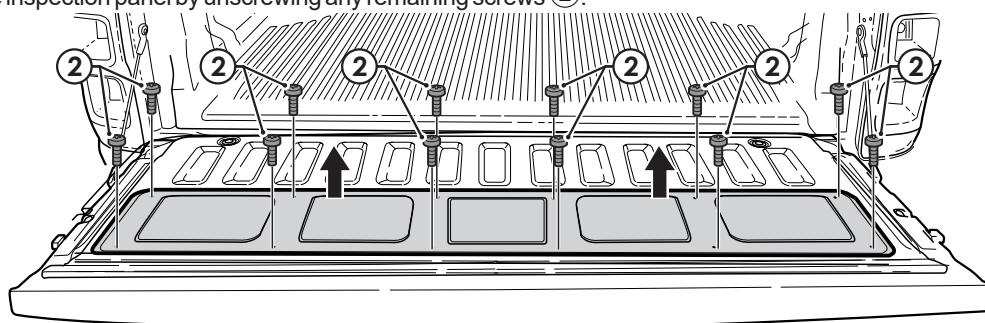
4

PREPARE THE TAILGATE

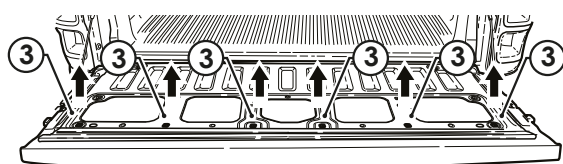
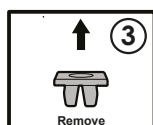
- Remove tailgate liner (if fitted) by unscrewing the factory screws ① and then peeling off the plastic retainer strip (if fitted).



- Remove the inspection panel by unscrewing any remaining screws ②.



- Remove all plastic inserts ③ from the top row of the inspection panel.



- Where a spray in bed liner is fitted, sometimes there is residual paint material inside the holes which must be cleared. Drill through the inspection panel to create a clearance for supplied bolts to go through using a 7mm drill bit.

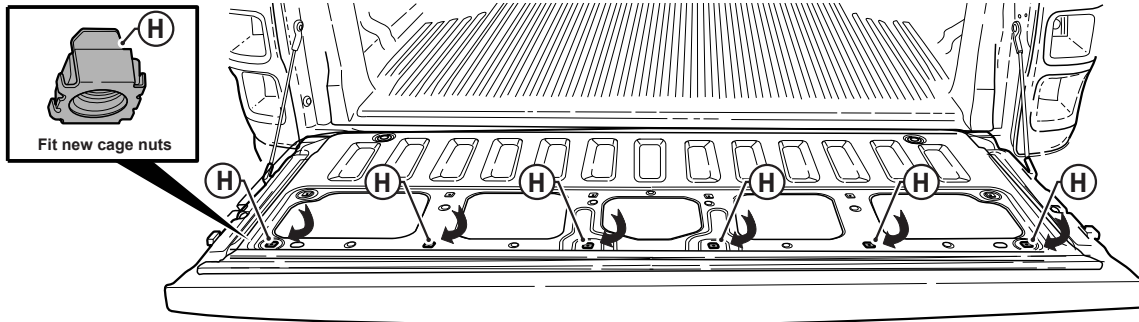


5

FIT THE CAGE NUTS

- Replace the plastic inserts with the supplied Cage Nuts (H).

Note: Fit the cage nuts from the underside of the inspection panel. First engage one leg of the cage nut in the hole and then apply some force and push the other leg of the cage nut so that it fits through the hole.

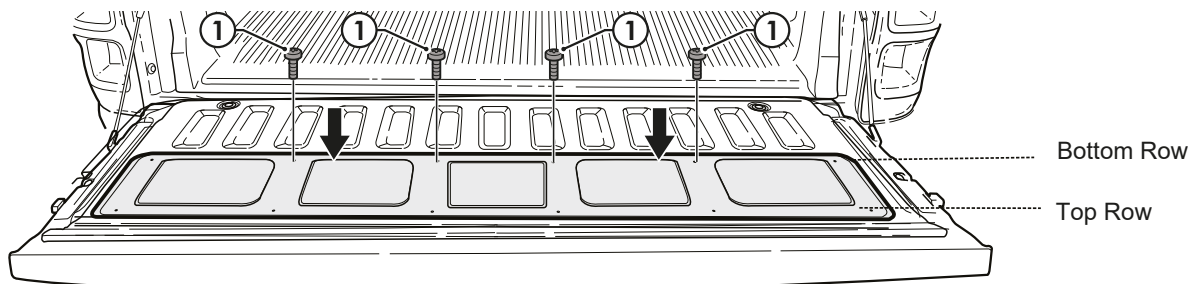


For Vehicles with Ute Liners Fitted Only:

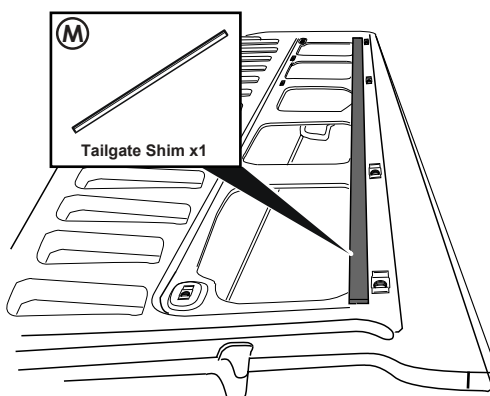
- Without refitting the screws yet, place the inspection panel first, followed by the Tailgate Rail (G), into position on the tailgate. Then put the tailgate liner over the top. Take note of all holes which will be covered over by the tailgate liner. Then set aside.

Note: It may help to mark these holes with a felt pen or pencil.

- For the holes you just marked:
 - Refit original factory screws to the bottom row of the tailgate, as required.
 - Fit M6 Bolts (I) to the Cage Nuts (H) to the top row of the tailgate, as required.



For Vehicles with No Removable inspection Panel Only:



- If there is no inspection panel on the vehicle, peel the backing off the adhesive tape, attached to Tailgate Shim (M). Then position directly below the cage nuts - ensuring distance between the two is no greater than 1mm.

Important



Factory screws must only be refit to plastic inserts. M6 Bolts (I) must be fitted to Cage Nuts (H).

Important



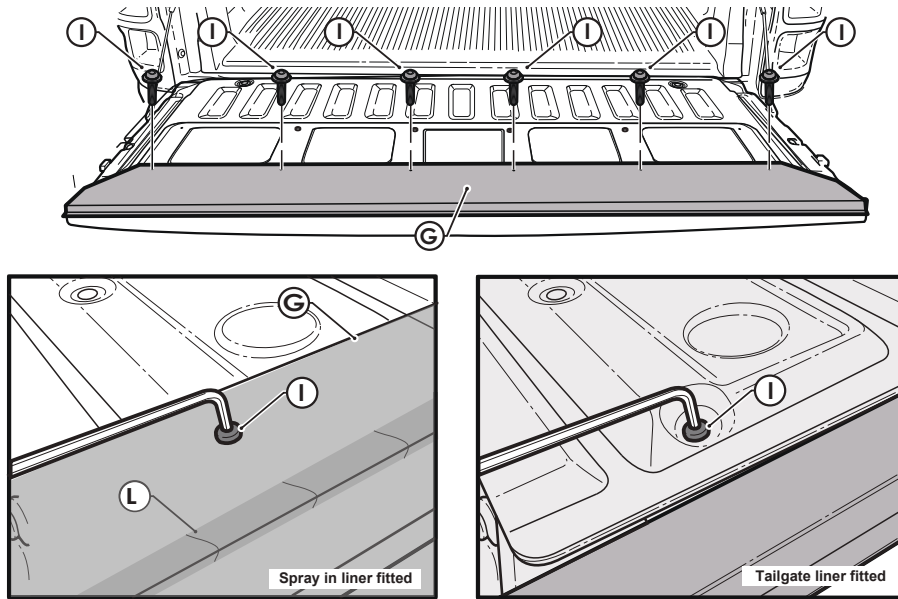
Use VERY low torque when refitting factory screws as there is a risk the thread inside the plastic inserts will strip.

For Vehicles without Ute Liner: Please continue to Step 6.

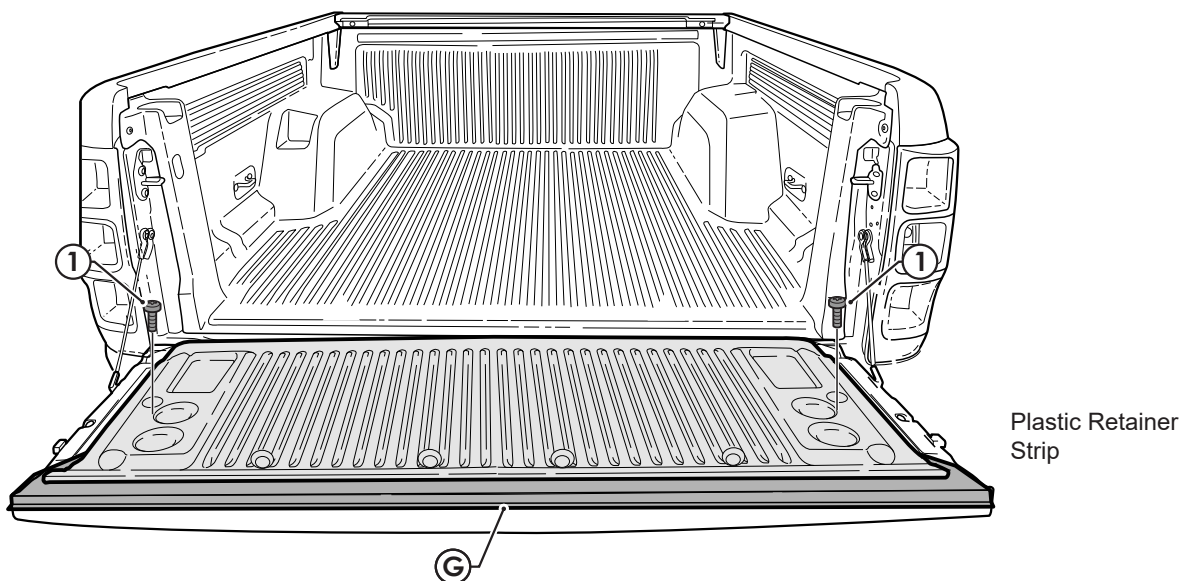
6

ATTACH THE TAILGATE RAIL

- Fit the Tailgate Rail ⑥, then place the tailgate liner (if fitted) on top ensuring all holes are aligned.
- Place an M6 Button Head Screw with Collar ① through the tailgate liner (if fitted), Tailgate Rail ⑥ and inspection panel and into each of the Cage Nuts, tighten using an allen key.
- If spray in liner is fitted, first install the Tailgate Liner Retaining Strip ④ using the top edge of the inspection panel opening as the datum line, followed by the tailgate rail ⑥, then tighten down using M6 Button Head screws ①.



- For vehicle's with tailgate liners, use the original screws ① and secure the outside edges of the bottom half of the liner.
- Refit the Plastic Retainer Strip which was removed in Step 4 to the edge of the tailgate liner.



7 FIT THE TONNEAU COVER

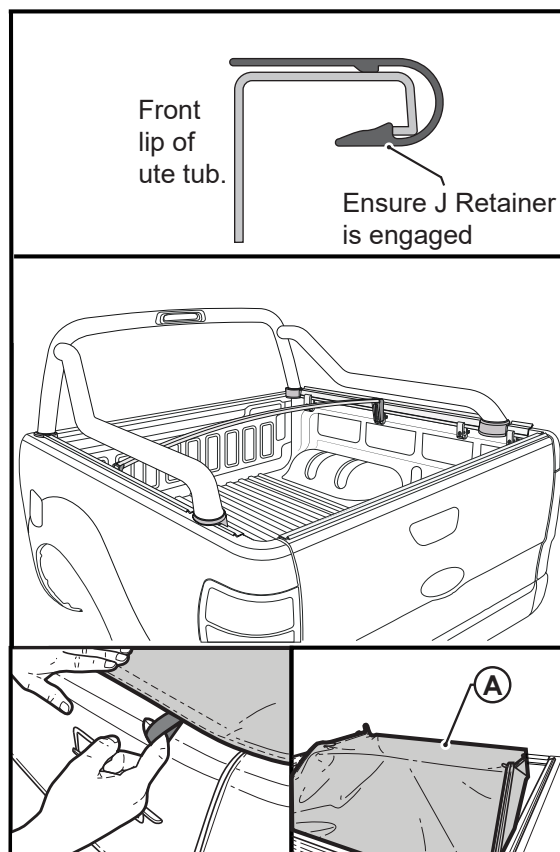
- Attach the plastic retainer strip on the front of the Tonneau Cover ^(A) to the front lip of the tub behind the cab.
- Engage the back of the cover first, followed by the sides.

Note: Ensure the support bar is fitted underneath the Tonneau Cover to prevent water ingress and to keep the cover tight.



Use the pull tabs to assist whenever you open or close your cover.

Note: Fitment will be tight straight out of the box, but this should loosen up a little after a week or so.



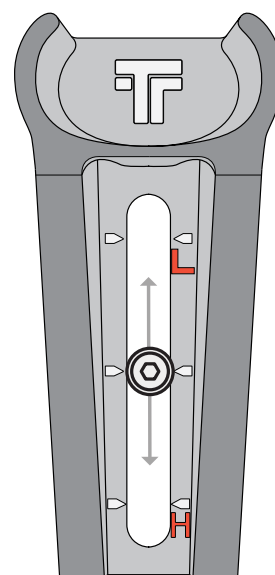
ADJUSTING THE TENSION OF THE COVER

- To adjust the tension of the cover, you must adjust the height of the support bar. To do this, we have designed a patented adjustable bracket system which will allow you to freely adjust the height to any position within the range of the bracket.
- Simply loosen the bolt which goes through the Bar Bracket ^(B) and Clamp ^(D), then move the bracket either up or down until the bolt is at your desired level. Re-tighten the bolt.
- Your Adjustable Bar Bracket has a large tension range.
"L" lowers the height and loosens the cover.
"H" increases the height and tightens the cover.



"L" set here if cover is tight and hard to clip on.

"H" set here if cover is loose or if water is pooling on it.

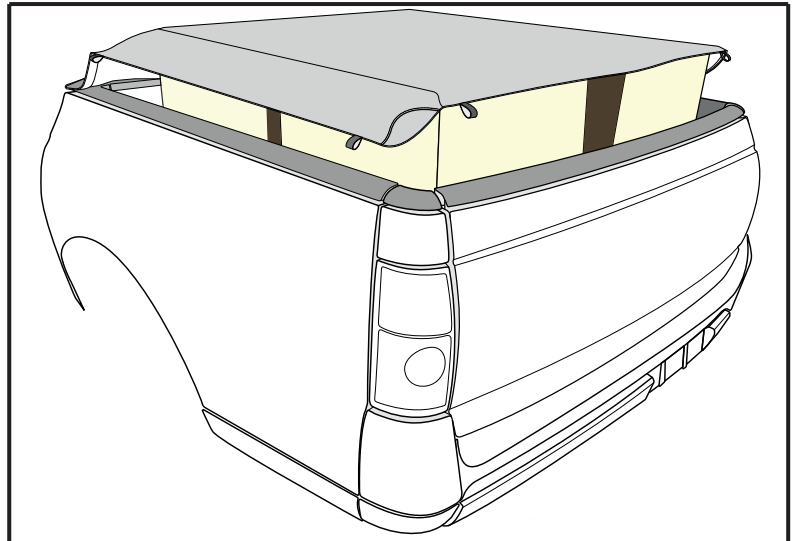


CONGRATULATIONS!
YOU HAVE SUCCESSFULLY INSTALLED YOUR
CLIPON 2.0[®] TONNEAU COVER

HOW TO USE THE OVERSIZED LOAD SYSTEM

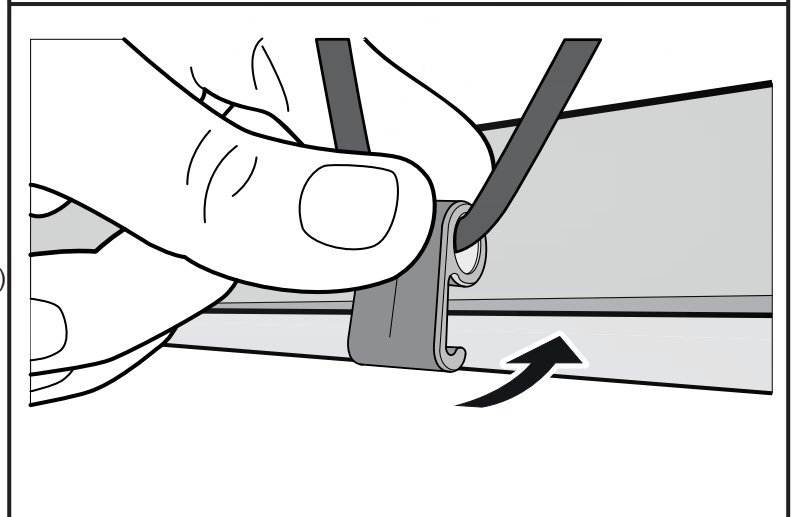
STEP 1

- Place the load into the ute tub then drape the tonneau cover over it as shown.



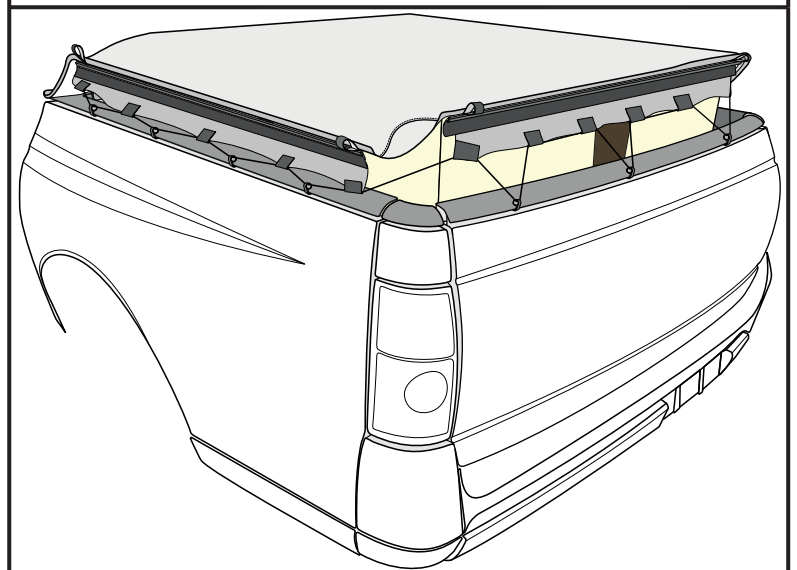
STEP 2

- Engage the Rope Hooks from underneath the Tonneau Cover and clip each one onto either the Tub Rail (Holden Commodore/Crewman) or Aluminium Rail (all other vehicles).



STEP 3

- Engage all Rope Hooks for a secure fit.



Important



The Tonneau Cover is not designed to be a load restraint. You **MUST** securely tie down your load first and then use the Oversized Load Cover System.

ADJUSTING BED LINER TO FIT LAST CLAMP

Note: Only adjust Bed Liner if having difficulty fitting the clamp behind the rear leg of the Sports Bar.

- Locate the fasteners, circled below, on both sides of the vehicle and loosen them off to allow the bed liner to move forward and rearward.
- Grip the bed liner and force it rearward until there is enough room to fit a clamp and re-tighten the fasteners.

