

# TONNEAU FITTING INSTRUCTION

Holden Rodeo Dual Cab

Without Sport Bar and Headboard

2003 – July 2012

**Part number: 11192**

## Package includes

<input type="checkbox"/> 1 X Tonneau Cover	<input type="checkbox"/> 2 x Bar Brackets
<input type="checkbox"/> 1 x Tonneau Support Bar	<input type="checkbox"/> 32 x Rivets
<input type="checkbox"/> 3 x Aluminium Rope Track-484mm long ea.	<input type="checkbox"/> 1 x Lock Bracket
<input type="checkbox"/> 1 x Support Bar Sheath	<input type="checkbox"/> 18 x Rope Buttons
<input type="checkbox"/> 1 x Fitting Instructions	<input type="checkbox"/> 4 x Dowel

# 1. TONNEAU COVER FITTING

**NOTE** Read entire instructions prior to start. Pictures are for illustration purposes only.

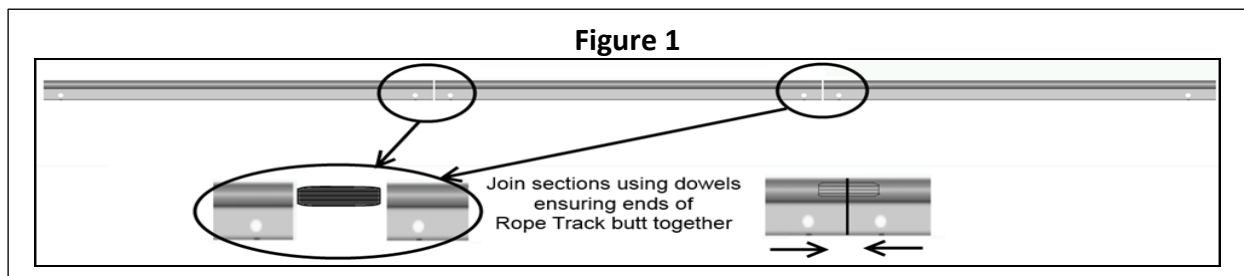
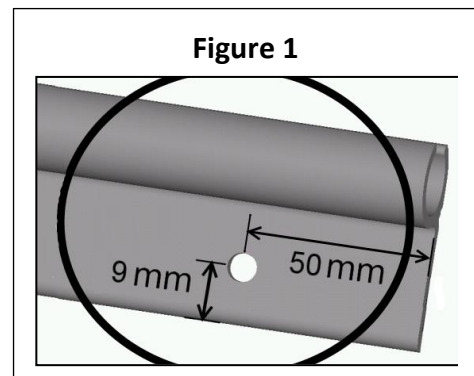
## 1.1 BASIC TOOL REQUIRED

Drill, 4mm Drill Bit, Rivet Gun, Marking Pencil / Pen

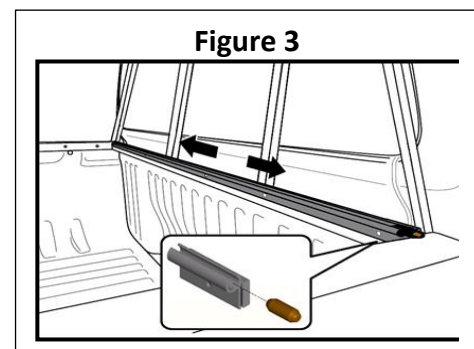
## 1.2 TONNEAU COVER INSTALLATION PROCEDURE

### Step 1. Fit the Ropetrack

- (a) Using a 4mm drill bit, drill a hole 50 mm in from each end and 9 mm up from the bottom of the 3 pieces of rope track as shown in **Figure 1**.
- (b) Join the 3 pieces of rope track together using the 2 pieces of wooden dowel as shown in **Figure 2**

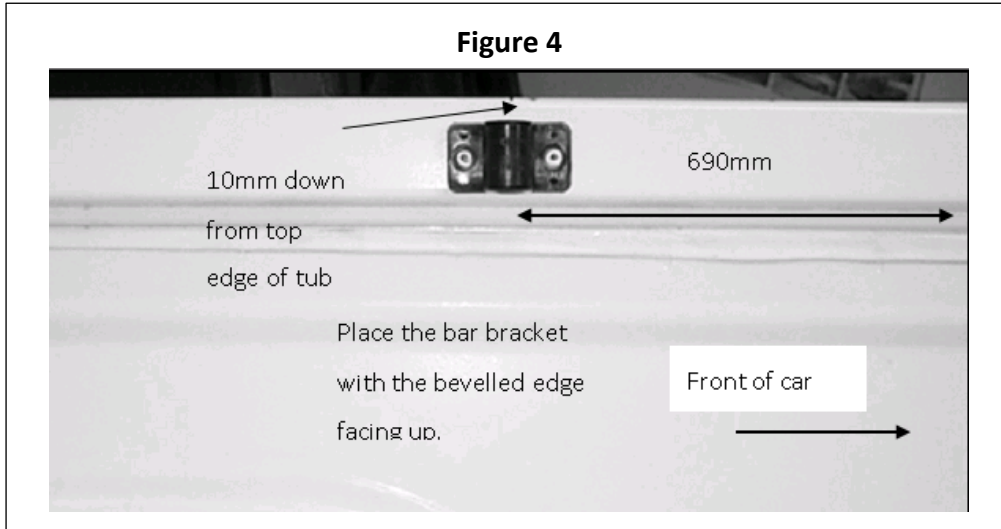


- (c) Place the remaining 2 pieces of dowel in the ends of the rope track. **See Figure 3**
- (d) Ensure the flat side of the rope track is the surface positioned vertical against the tub face.
- (e) Drill through the holes in the rope track into the front wall of the tub.
- (f) Apply a bead of clear silicone along the centre of the front edge of the rope track.
- (g) Rivet the aluminium rope track into position.



## Step 2. Fit The Support Bar Brackets

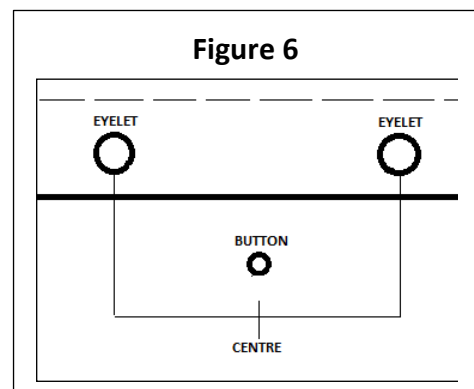
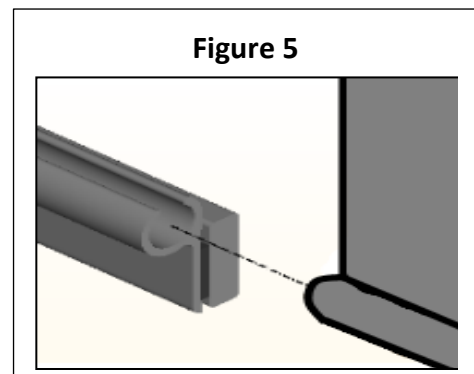
- (a) Mark the inside edge on each side of the tub at 690mm from the inside front face of tub towards the rear on each side.
- (b) Centrally locate the bar bracket over this position and align the top of the bar bracket 10mm down from the top edge of the tub and drill and rivet bracket into place. **See Figure 4.**



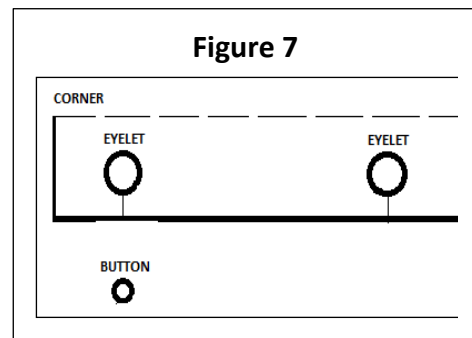
- (c) Repeat for other side of tub. Use instruction over page to fit tonneau support bar.

## Step 3. Fit The Buttons To Vehicle Tailgate

- (a) Slide the front of the tonneau cover through the aluminium rope track section. **See Figure 5**
- (b) **Ensure tonneau is centred and taut (this is critical).** Start with the **Tailgate.**
- (c) Start with the rear centre eyelets. Vertically line up each rope button individually to the centre between two eyelets.
- (d) With a marking pencil make a mark at the height you would like the rope buttons (the continuous rope has a lot of stretch and can be adjusted to suit different rope button heights). This mark is the place to drill a hole and secure the first button with a pop rivet. **See Figure 6**
- (e) Secure the Tonneau cover to the tailgate using the continuous rope as the rope buttons are fitted.



**Important:** At the corners of the ute body, fit the button directly under the last eyelet on the side / back.



#### **Step 4. To fit buttons to the sides of the Ute:**

- (a) Work from the rear towards the front, alternate from one side of the vehicle to the other.
- (b) Line up each rope button (except the rear corners, which are placed directly below the eyelet) between two eyelets. Measure down the same distance used on the rear tailgate and mark with pencil. Drill and rivet rope button into position.
- (c) Secure the Tonneau cover to the vehicle's sides as the rope buttons are fitted.
- (d) To tension the rope, start at the front driver's side of the car. Pull the continuous rope taught around the rope button and feed the excess rope towards the rear of the tray. Continue to tension the rope around the buttons around the tray towards the front passenger side. Feed all the excess rope back through the eyelets until the rope is taught, not tight on all of the rope buttons. At the front passenger side, undo the knot in the end of the rope, and re-position it just behind the final eyelet on the cover. The excess rope can be cut off behind this knot, or tucked into the tray for adjustment later.

## **2. TONNO LOCK**

The Tonno Lock is now a standard feature included with all Tuff Tonneaus. The Tonno Lock is situated at the front of the tonneau cover, so as not to impede the accessibility of the Tuff Tonneau.

Fitting the lock is simple and only requires a small attachment on the inside edge of the tub behind the cab. Together with a padlock, it provides you with an extremely effective theft deterrent. The Tonno Lock is designed to suit all utes and prevent thieves stealing your Tuff Tonneau, so you can continue to rely on the Tuff Tonneaus' name to give you what you want in a tonneau cover.



## 2.1 BASIC TOOL REQUIRED

Rivet gun, Drill, Torch, and Marking Pencil/Pen.

You will need to buy a small Padlock- make sure the padlock will go through the hole on the Tonno lock.

## 2.2 TONNO LOCK CONTENTS

- 2 X 4MM Aluminium rivets
- 1 x Tonno Lock bracket

## 2.3 FITTING TONNO LOCK

1. Attach the black lock bracket to the bracket on the tonneau with your padlock, and fit the tarp.
2. Getting under the tarp with a torch, place the lock bracket against the body and mark holes with a pen.
3. Remove tonneau and drill the marks with a 4 mm drill bit, place the lock bracket in position and rivet.

## 3. MULTI-FIT SUPPORT BAR

The Tuff Tonneau Multi - Fit Support Bar is designed to fit almost all Utes on the Market, from Suburu Brumbys to Cab Chassis aluminium trays.



### 3.1 BASIC TOOL REQUIRED

Drill, 4mm drill bit

### 3.2 MULTI-FIT SUPPORT BAR CONTENTS

- 1 x hollow bar centrepiece
- 2 x grub screws
- 2 x solid bar end piece
- 1 x Tonneau bar sheath

### 3.3 FITTING MULTI-FIT BAR

1. Insert solid bar pieces into either end of hollow tube. Adjust bar so it fits between bar bracket holders with the holes facing to the ground (so the grub screws don't rub against the tonneau), as shown above and then with a white pencil make a mark through the small holes of the hollow bar onto the solid ends. This is where you will drill a hole to the depth of about 1-2mm (do not go any further)

2. Join the pieces back together and screw grub screws through the hollow bar into the holes that you drilled. **Make sure you do not over tighten the grub screws**. Then place the tonneau sheath over the bar to stop the bar wearing against the tonneau. Refit the bar. You may kink the bar in the middle to give it some extra height to assist with water runoff.

**Warning if you do not fit the tonneau sheath over the bar, the tonneau cover will quickly wear through which is not covered by warranty.**

## 4. WARRANTY AND FEEDBACK

**Please register your warranty details online at:**

**QR Code:**



**Website Link:**

**<http://www.tto.com.au/en-au/warranty.html>**

**Please complete our 2 minute feedback section as we strive to constantly improve for our customers.**

**Your Tuff Tonneau is now ready for work.**