

# TONNEAU INSTALLATION INSTRUCTION

## Mitsubishi MQ/MR Triton Dual Cab Without Sports Bar and Headboard

July 2015 – Current

**Part number: 10929**

### Package includes

1 X Tonneau Cover	2 x Bar Brackets
1 x Tonneau Support Bar	31 x Long Rivets
1 x Support Bar Sheath	5 x Small Rivets
1 x Fitting Instructions	18 x Buttons
1 x Angle Aluminium (50mm x 25mm x 3mm) 1462mm	1 x Lock Bracket
1 X Angle Aluminium (20mm x 20mm x 3mm) 1462mm	18 x Anti Abrasive Discs

# 1. TONNEAU COVER FITTING

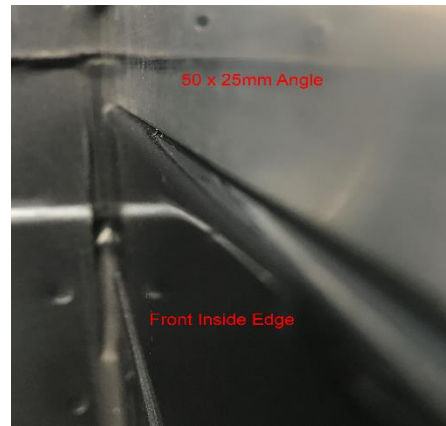
**NOTE** Read entire instructions prior to start.

## 1.1 BASIC TOOL REQUIRED

Drill, 4mm Drill Bit, Rivet Gun, Marking Pencil / Pen, Silicone

## 1.2 TONNEAU COVER INSTALLATION PROCEDURE

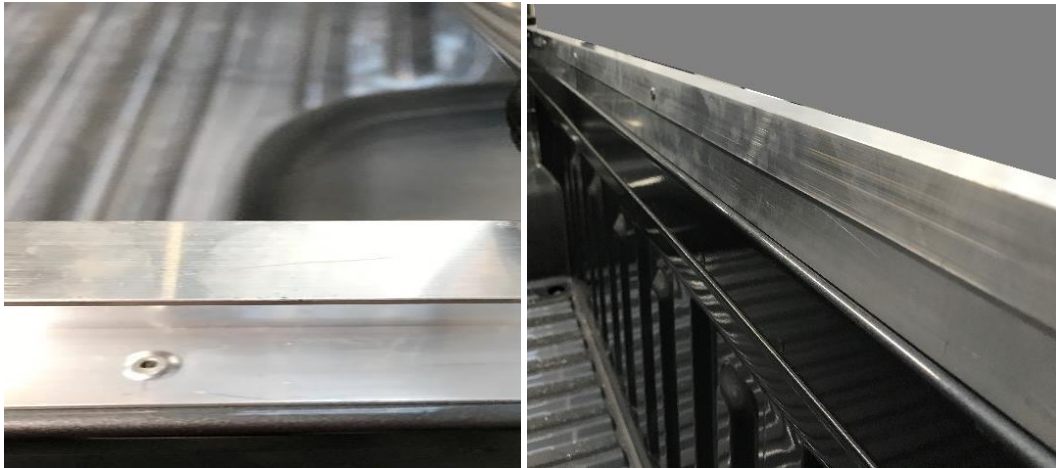
1. Place the 50 x 25mm angle on the front top edge of the ute. The 50mm wall of the angle needs to be vertical. Align the vertical face of the angle with the inside edge of the tub.



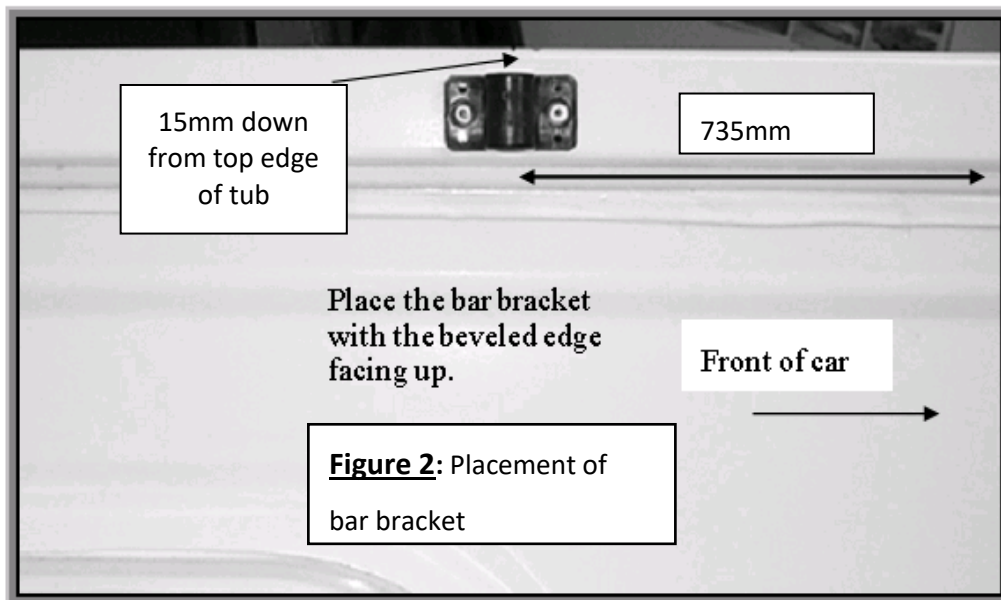
2. Drill 5 evenly spaced holes through the 25mm section of the angle and into the top edge of the tub. The first hole from each end will be about 50mm from the end of the angle. Pop rivet into place with 5 x long rivets.



3. Sit and centralize the 20 x 20mm angle on top of the 50 x 25mm angle. Drill 5 evenly spaced holes through the smaller angle, into the larger one already fitted. The first hole needs to be 30mm from each end.



4. Pop rivet the smaller angle to the larger one using 5 x short rivets
5. To fit the bar brackets, measure 735mm back from the inside front edge at the top of the tub and place them as shown in **Figure 2**. (15mm from top edge of tub). Drill and rivet using two large rivets for each Bar Bracket.



6. Refer to Section 3 to fit support bar.
7. To attach the cover, clip the front 'J' retainer onto the angle fitted to the front edge of the tub and drape the cover across the tub.

8. To fit the rope buttons to the tailgate measure 455mm up from the bottom edge on both sides of the tailgate and mark. With a straight edge draw a line between these two marks.
9. Centre the cover and mark the position of each bunji loop on the line drawn in step 8.
10. With a 4 mm drill bit drill holes in these positions and pop rivet and a rope button to the tailgate. Attach the rear bunji loops to the buttons as you go.



11. To fit the rope buttons to the sides of the tub measure and mark 160mm from the inside edge of the tub down the outside.
12. From where the last bunji is situated on each side measure and mark 120mm from the inside edge at the front of the tub down the outside.
13. With a straight edge draw a line between the two positions marked in step 10 and 11. On this line mark the positions of each side bunji except for the front bunji on each side.  
For this bunji place a mark on the line 50mm from the front of the tub.
14. With a 4mm drill bit drill holes in these positions and pop rivet a rope button to the side.  
Attach the bunji loops to the buttons when attached alternating from left to right working your way to the rear of the tub.



15. To Fit Anti-Abrasive Discs: Firstly clean the area behind each bunji head with a clean rag and methylated spirits. Then attach the anti-abrasive discs centrally behind each bunji head.

## 2. TONNO LOCK

The Tonno Lock is now a standard feature included with all Tuff Tonneaus. The Tonno Lock is situated at the front of the tonneau cover, so as not to impede the accessibility of the Tuff Tonneau.

Fitting the lock is simple and only requires a small attachment on the inside edge of the tub behind the cab. Together with a padlock, it provides you with an extremely effective theft deterrent. The Tonno Lock is designed to suit

all utes and prevent thieves stealing your Tuff Tonneau, so you can continue to rely on the Tuff Tonneaus' name to give you what you want in a tonneau cover.



### 2.1 BASIC TOOL REQUIRED

Rivet gun, Drill, Torch, and Marking Pencil/Pen.

You will need to buy a small Padlock- make sure the padlock will go through the hole on the Tonno lock.

### 2.2 TONNO LOCK CONTENTS

- 2 x 4MM Short Aluminium rivets
- 1 x Tonno Lock bracket

### 2.3 FITTING TONNO LOCK

1. Attach the lock bracket to the bracket on the tonneau with your padlock, and fit the tarp.
2. Getting under the tarp with a torch, place the lock bracket against the body and mark holes with a pen.
3. Remove tonneau and drill the marks with a 4 mm drill bit, place the lock bracket in position and rivet using 2 x short rivets.

## 3. MULTI-FIT SUPPORT BAR

The Tuff Tonneau Multi - Fit Support Bar is designed to fit almost all Utes on the Market, from Subaru Brumbys to Cab Chassis aluminium trays.

Part No: 300516



### 3.1 BASIC TOOL REQUIRED

Drill, 4mm drill bit

### 3.2 MULTI-FIT SUPPORT BAR CONTENTS

- 1 x hollow bar centrepiece
- 2 x grub screws
- 2 x solid bar end piece
- 1 x Tonneau bar sheath

### 3.3 FITTING MULTI-FIT BAR

1. Insert solid bar pieces into either end of hollow tube. Adjust bar so it fits between bar bracket holders with the holes facing to the ground (so the grub screws don't rub against the tonneau), as shown above and then with a white pencil make a mark through the small holes of the hollow bar onto the solid ends. This is where you will drill a hole to the depth of about 1-2mm (do not go any further)
2. Join the pieces back together and screw grub screws through the hollow bar into the holes that you drilled. **Make sure you do not over tighten the grub screws**. Then place the tonneau sheath over the bar to stop the bar wearing against the tonneau. Refit the bar. You may kink the bar in the middle to give it some extra height to assist with water runoff.

**Warning if you do not fit the tonneau sheath over the bar, the tonneau cover will quickly wear through which is not covered by warranty.**

## 4. WARRANTY AND FEEDBACK

**Please register your warranty details online at:**

**QR Code:**



**Website Link:**

**<http://www.tto.com.au/en-au/warranty.html>**

**Please complete our 2 minute feedback section as we strive to constantly improve for our customers.**

**Your Tuff Tonneau is now ready for work.**